



Panchmukhi Heights



Panchmukhi
Heights

The ultimate destination for luxury living.....

Specification.....

Structure

Foundation	RCC Substructure on piles
Super Structure	RCC framed structure with ductile detailing
Walls	Fly Ash/ Red Brick/ ACC Block

Wall Finish

Exterior	Glass/Textured/Weather Coat Based Paints as per Architect's Design
Interior	Plaster of Paris /Putty
Toilet	Good quality ceramic tiles on walls upto door height.
Kitchen	Dado of Ceramic Tiles upto 2ft. above the counter /platform.

Flooring

Living/ Dining Bedroom	Living/Dining & all Bedrooms with vitrified tiles.
Kitchen	Ceramic/Vitrified Tiles. Granite platform with horned edges. Stainless steel sink.
Toilet	Anti Skid Ceramic/Vitrified Tiles

Door/ Window

Door Frame	Made of seasoned & treated wood
------------	---------------------------------

Main Door	Laminated Door with handles
Main Door fittings	Godrej Night Latch /Equivalent
Internal Doors	Flushed Doors
Windows	Fully Glazed sliding anodized aluminum window

ELECTRICAL

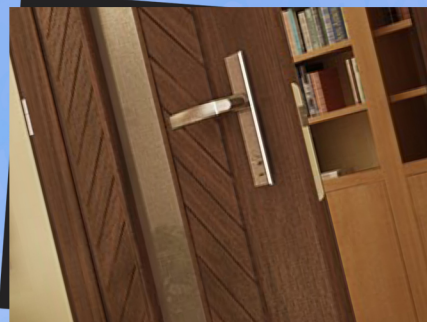
AC point in Living/Dining & Master Bedroom and necessary electrical points inside the Unit. Cable TV, Telephone in Living/Dining. Concealed Copper Wiring with MCB of Havells or equivalent make. Door bell point at main entrance door. Modular switches of Havells or equivalent make. Electrical points for refrigerator, water purifier & Exhaust fan or Provision for Exhaust cutout.

COMMON LIGHTING

Overhead illumination for compound & steel lighting. Necessary illumination in all lobbies, staircase & common areas

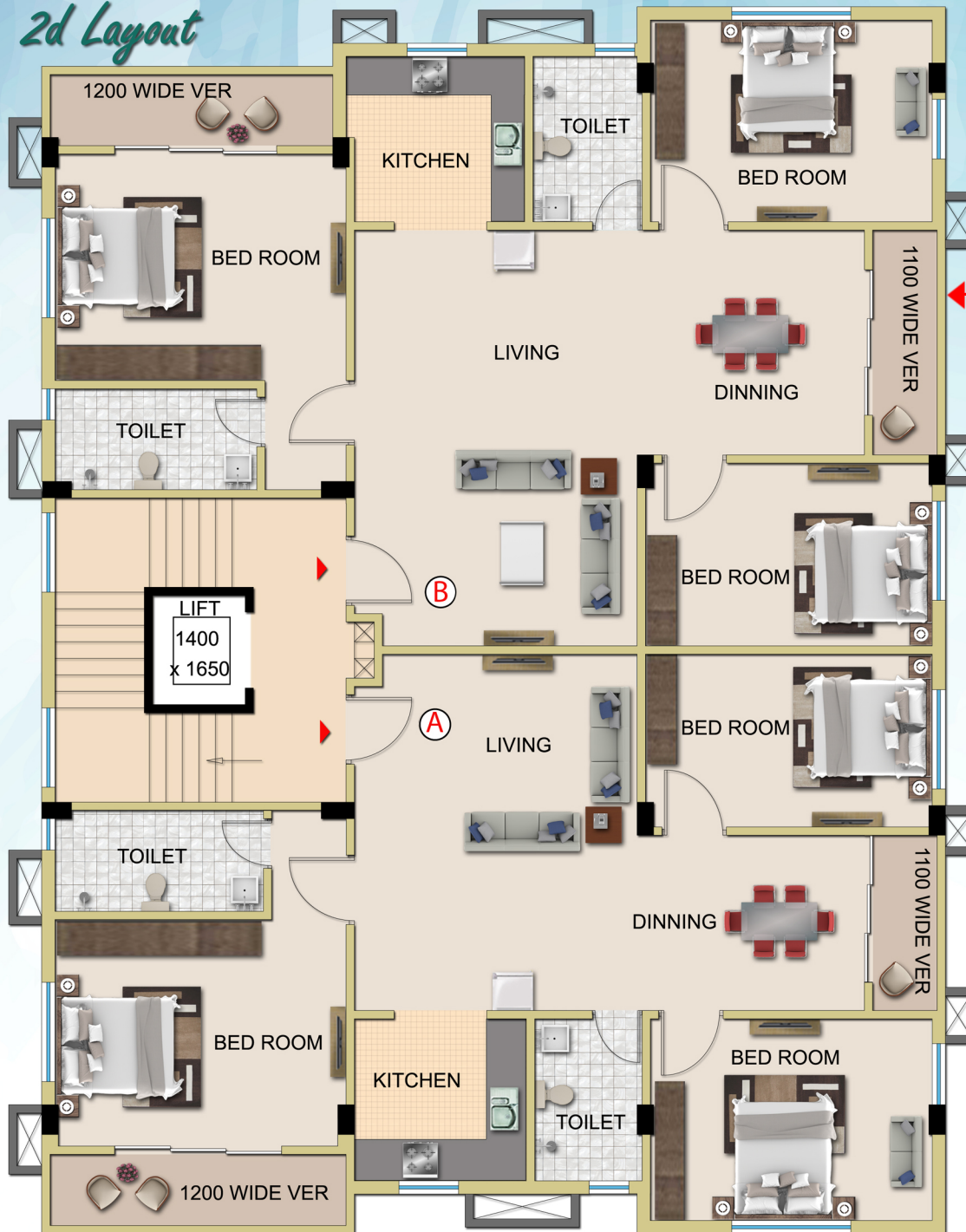
LIFTS, STAIRS & LOBBIES

OTIS or equivalent make
Kota stones or tiles. Entrance ground floor lobby of each block-combination of Marble, Granite & Kota stones.



Decorated Rooftop
Intercom Facility
Infrastructure for DTH
CCTV

2d Layout



Typical Floor Layout

Exploded View



Flat	Carpet Area	Covered Area	Super Builtup Area
A	995sq.ft	1267 sq.ft	1590 sq. ft
B	1076sq.ft	1365 sq.ft	1710 sq. ft





A PROJECT BY:



DEVELOPED BY:

PANCHMUKHI HEIGHTS PVT LTD

435/10 Jessore Road
Kolkata- 700055

Phone No.- 8820510101/ 30303

Website : GANGOTRI-GROUP.COM
email: marketing@gangotri-group.com

MARKETED BY:

EVER BLINK MARKETING

CALL : 9748534567

ARCHITECT :



D.J. Consultants & Associates
255 Dumdum Park, Kol- 55.
Phone No. - 2590-6003
e-mail. - info@djcon .org



Design By: F9 PLANET
Cont: 033- 688 88 441, 9830523450
WEB: www.f9planet.com

Disclaimer: This is not a legal document, the plans and photographs are conceptual. The actual product shall vary according to the sole discretion of the developer . No claims shall be entertained by the developer depending on this material.